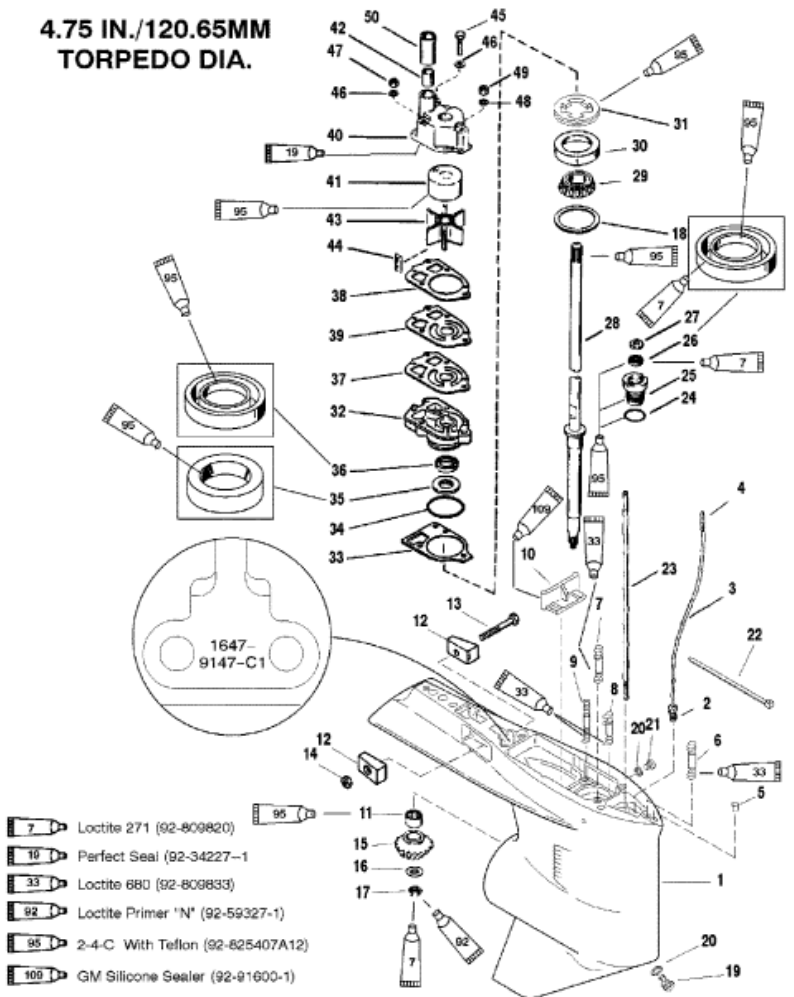


**4.75 IN./120.65MM  
 TORPEDO DIA.**



11976

Parts List						
Ref	Class	Part	Description	Qty	Comment	Footnote
1	1647	9148A47	GEAR HOUSING	1	(Black) (Basic)	
1	1647	9148A48	GEAR HOUSING	1	(Black) (Basic)	
2	22	85822A10	CONNECTOR ASSEMBLY	1		
3		NSS	NOT SOLD SEPARATE, Tubin	1		7
4		NSS	NOT SOLD SEPARATE, Conn	1		7
5	17	43044	PIN, Dowel (.375 x .625) (Witho	2		
6	16	18978 3	STUD, (.438 x 3.82 Inches)	1		5
7	16	57920 3	STUD, (.437-14/.437-20 x 2.060)	2		5
8	16	56297	STUD, (.312 x 3.38)	1		
9	16	30667	STUD, (.250-20/.250-28 x 3.125)	2		
10		67891	FILLER BLOCK	1		
11	31	42647A 1	BEARING ASSEMBLY, Roller	1		
12		826134	ANODE	2		
13	10	40003 33	SCREW, (M6 x 40)	1		
14	11	826833 6	NUT, (M6)	1		
15		NSS	NOT SOLD SEPARATE, Pinion Ge	1	(2.0:1 Gear Ratio-14 Teeth)	7
15		NSS	NOT SOLD SEPARATE, Pinion Ge	1	(1.87:1 Gear Ratio-15 Teeth)	7
16	12	92721	WASHER	1		
17	11	35921	NUT, (.625-18)	1		
18	15	42637A 1	SHIM SET	AR		9
19	22	67892A 1	FITTING KIT, Plug Fill/Drain	1		
20	12	19183	WASHER, Fiber	2		10,8
21	10	79953A 2	SCREW KIT, (.375-16 x .250)	1		
22		56762	CABLE TIE, (4.00 Inches)	1		
23		78902 2	SHIFT SHAFT	1		
24	25	25439	O-RING, (.862 x .103)	1		4,8
25	23	77631A 2	BUSHING ASSEMBLY	1		8
26	26	816464 1	SEAL, Oil	1		8
27	12	77674	WASHER	1		
28	45	44209 1	DRIVESHAFT	1		
29	31	36387A 1	BEARING, Roller	1		
30		NSS	NOT SOLD SEPARATE, Cup	1		7
31		824519	RETAINER	1		
32	46	42579A 3	WATER PUMP BASE ASSEMBLY	1		
33	27	42631 1	GASKET	1		4,10,8
34	25	90011	O-RING, (2.175 x .175)	1		
35	26	89238	OIL SEAL	1		8
36	26	16977	OIL SEAL	1		8
37	27	85608 1	GASKET	1		4,10,8
38	27	85609 1	GASKET	1		4,10,8
39		2242E	FACE PLATE	1		10